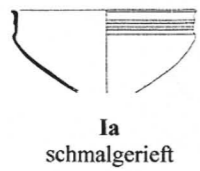


Textbeilage 1

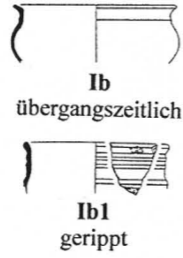
Drehscheibenkeramik

Handaufgebaute Keramik

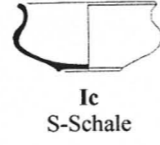
Form I
Schalen mit S-Profil
(= S-Schalen)



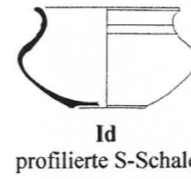
Ia
schmalgerieft



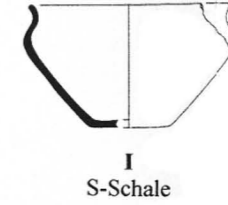
Ib
übergangszeitlich
Ib1
gerippt



Ic
S-Schale



Id
profilierte S-Schale



I
S-Schale

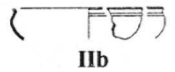
Form II
Einbiegende Schalen



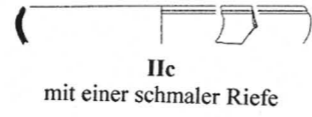
IIa
schmalgerieft



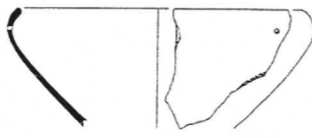
IIa1
mehrfach gerieft



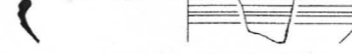
IIb
mit ausbiegenden Rand



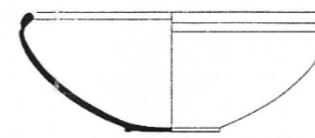
IIc
mit einer schmaler Riefe



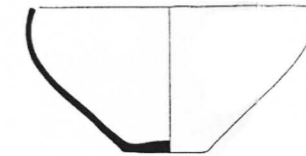
IIId
ohne Riefe



IIe
mit zwei Riefen



IIIf
mit breiter Riefe

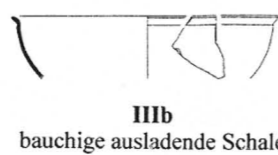


II
einbiegende Schale

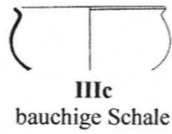
Form III
Offene Gefäßformen



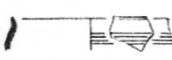
IIIa
schmalgeriefter Pokal



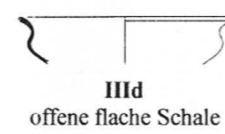
IIIb
bauchige ausladende Schale



IIIc
bauchige Schale



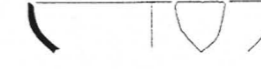
IIIc1
mit schmalen Riefen



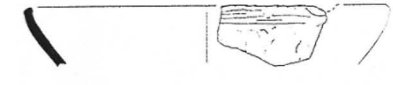
IIIId
offene flache Schale



IIIId1
mit breiter Riefe



IIIa
offene Schale

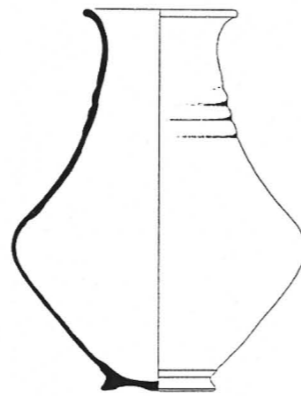


IIIb
rauwandige Schale
(mit/ohne Randausschnitt)

Form IV
Flaschen und
bauchige Gefäße



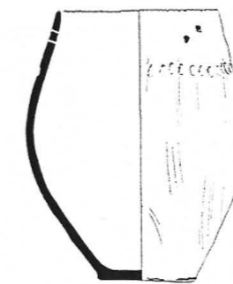
IVa
schmalgerieft



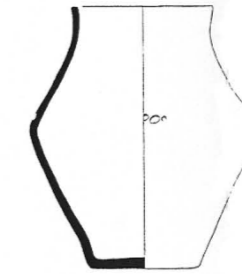
IVb
rippenverziert



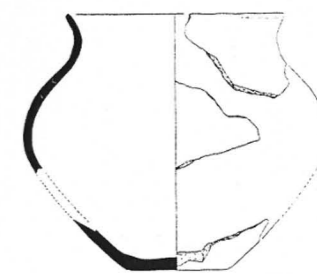
IVc
mit breiten Riefen



IVa
rauwandiger Topf



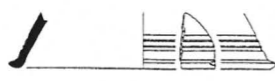
IVc
flaschenartiges
Großgefäß



IVd
bauchiges Großgefäß

IVb
rauwandiger glimmerhaltiger
(kristalliner) Topf

Form V
Bodenformen



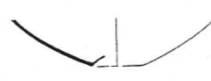
Va
schmalgeriefter
Hohlfuß



Vb
schmalgeriefter
hoher Fuß



Vc
schmalgerieft
mit Standfläche



Vd
mit Omphalos



Ve
mit angedrehtem
Standing



Vf
mit abgedrehtem
Standing



Va
mit Standing



Vb
mit Omphalos



Vc
mit Standfläche