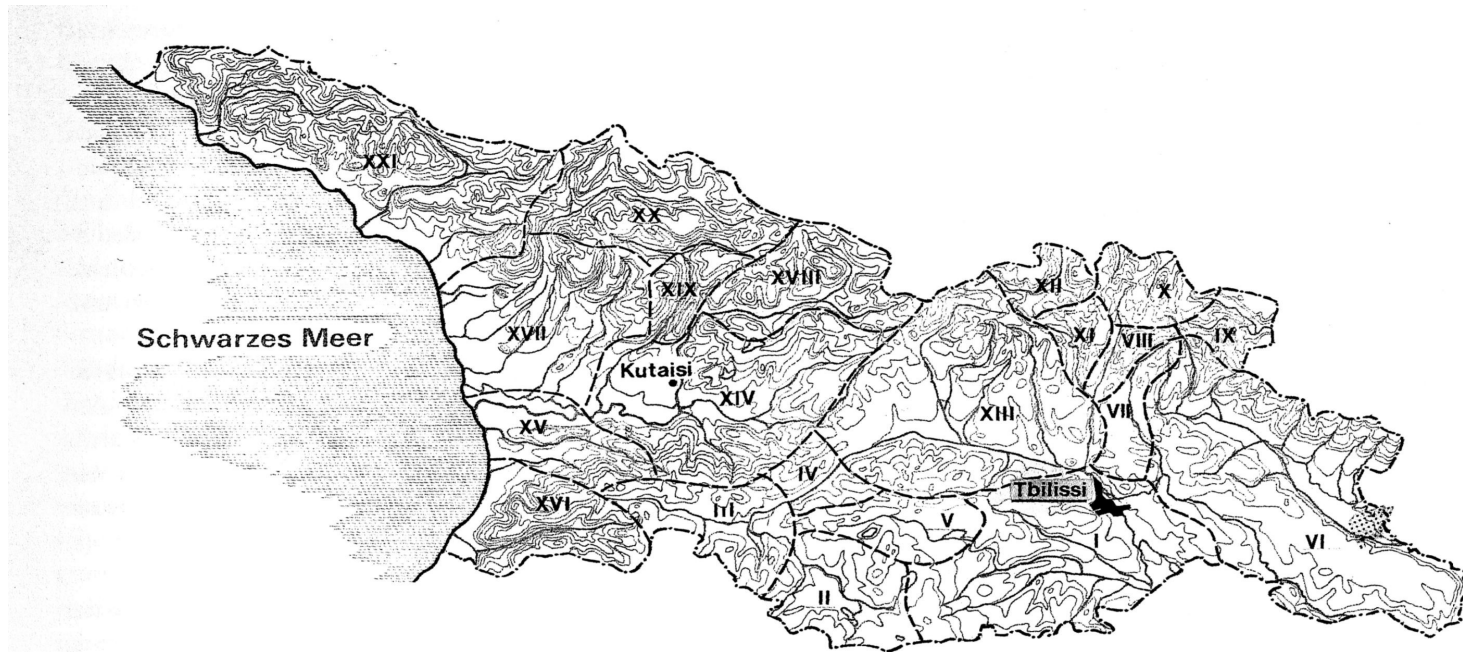


Abb. 1. Lage des Tsalka-Plateaus



Abb. 2. Lage des Tsalka-Plateaus

(Atlas 1965, 13)



Die historischen Provinzen Georgiens. I Kwemo (Unteres) Kartli; II Dshawacheti; III Mescheti; IV Tori; V Trialeti; VI Kacheti; VII Erzo-Tianeti; VIII Pschawi; IX Tuscheti; X Chewsureti; XI Mtiuleti; XII Chewi; XIII Schida (Inneres) Kartli; XIV Imereti; XV Gurien; XVI Adsharien; XVII Samegrelo (Megrelien); XVIII Ratscha; XIX Letschumi; XX Swaneti; XXI Abchaseti (Abchasien).

Abb. 3.

(Lordkipanidse 1991, Abb.1)

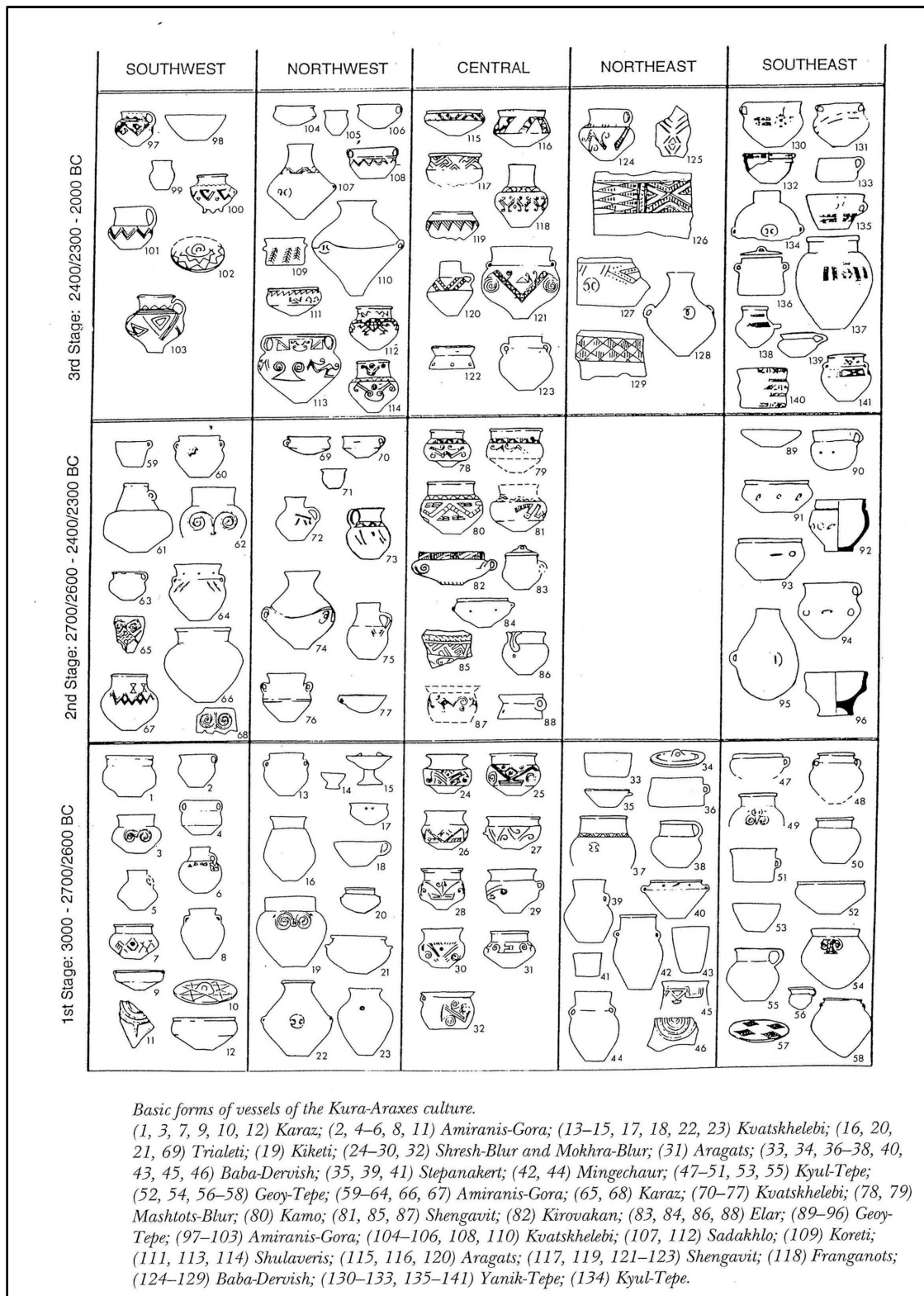


Abb. 4. Lokalvarianten der Kura-Arax-Kultur nach Kušnareva

(Kushnareva 1997, Fig. 19)

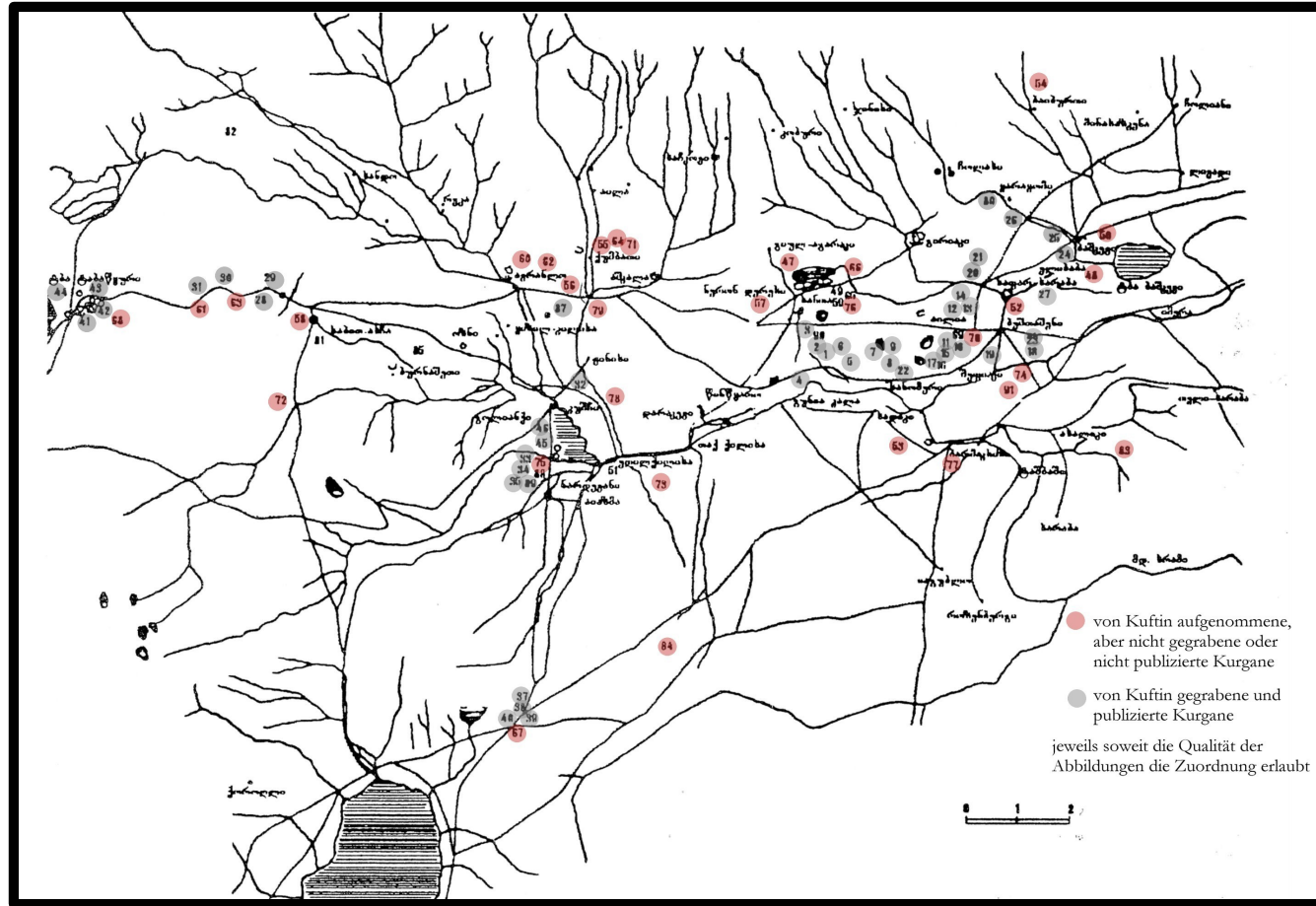


Abb. 5. Von Kuftin aufgenommene Kurgane auf dem Tsalka-Plateau und in dessen Umgebung

(Abulashvili 2001, Abb.1)

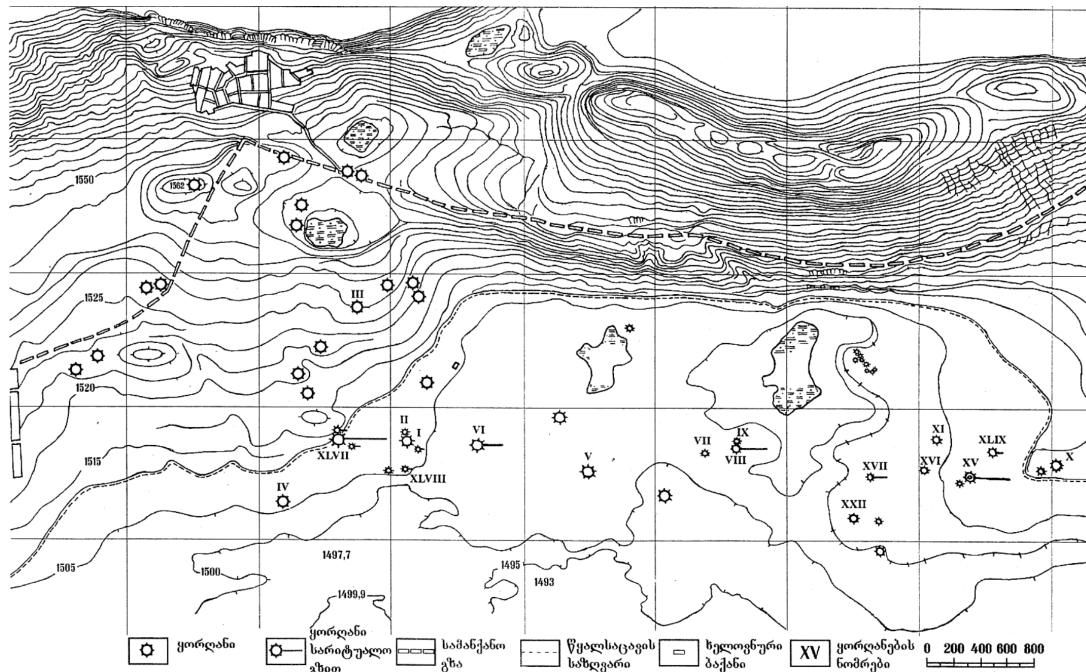


Abb. 6. Ausschnitt aus Narimanišvilis Kartierung des Tsalka-Plateaus. Die röm. Ziffern entsprechen Kufins Nummerierung der Kurgane. (Narimanishvili 2003, T. II)

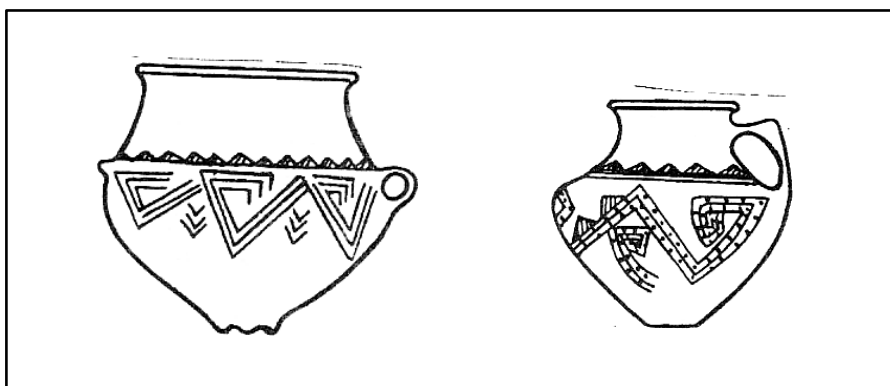


Abb. 7. Keramik aus Amiranis Gora

(Džaparidze 1998, Abb. 55)

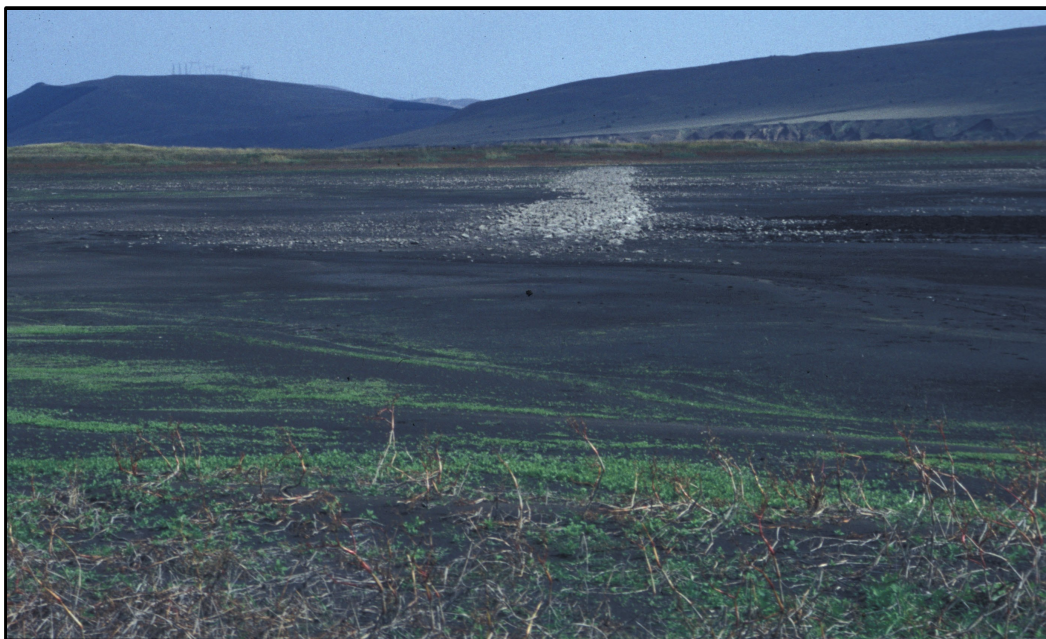


Abb. 8. Gepflasterter Weg

(Photo © G. Kastl)

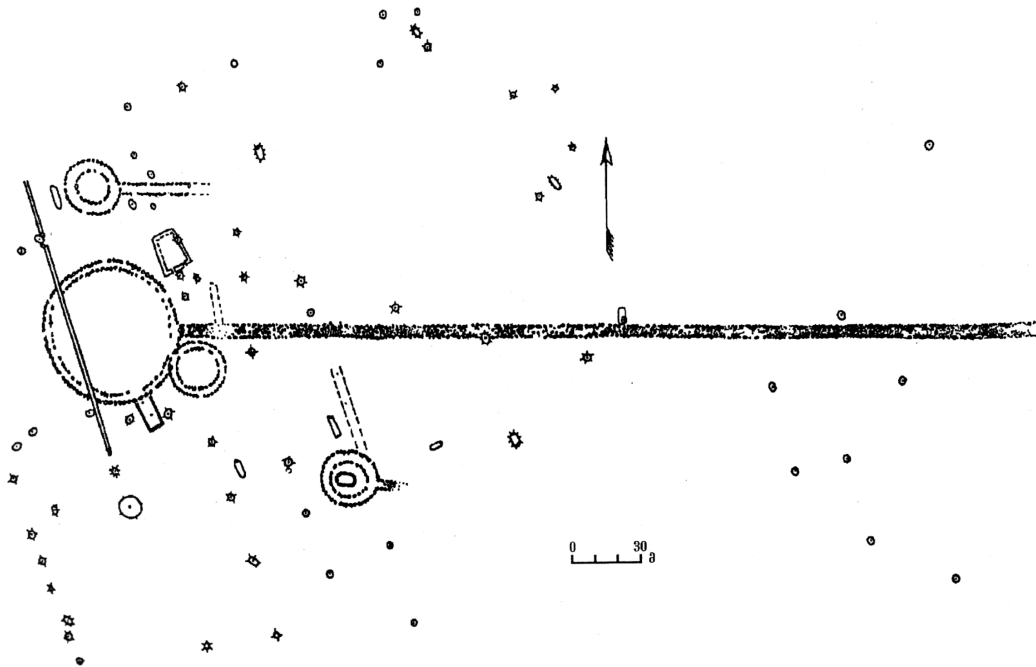


Abb. 9. Kurgan XLVII und dessen Umgebung

(Narimanishvili 2003, T. III.3)

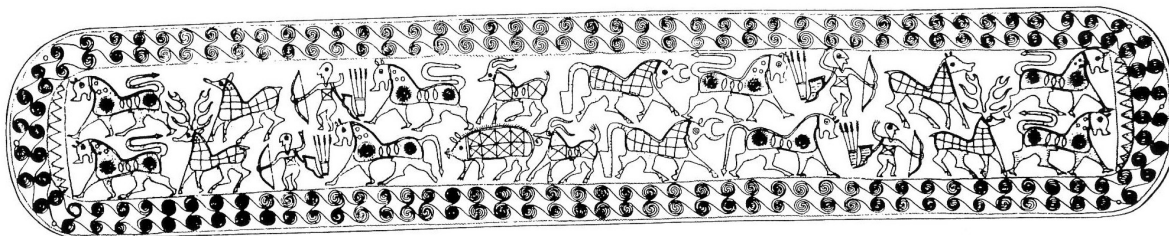


Abb. 10. Gürtel aus Sagaredjo Grab 3

(Lordkipanidse 1991, Abb 42.1)

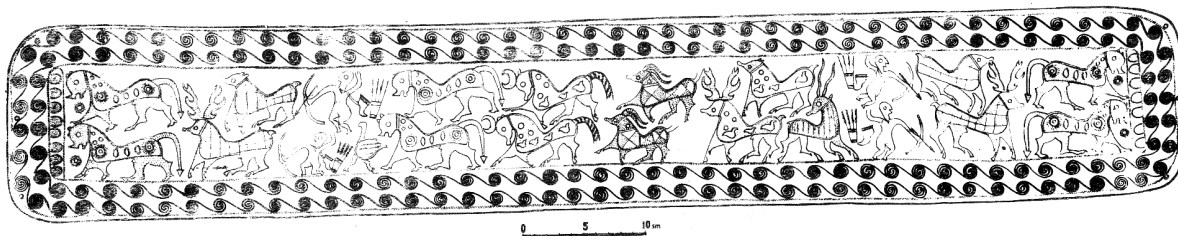


Abb. 11. Gürtel aus Narekvavi Grab 13

(Davlianidze 1985, Abb. 99)